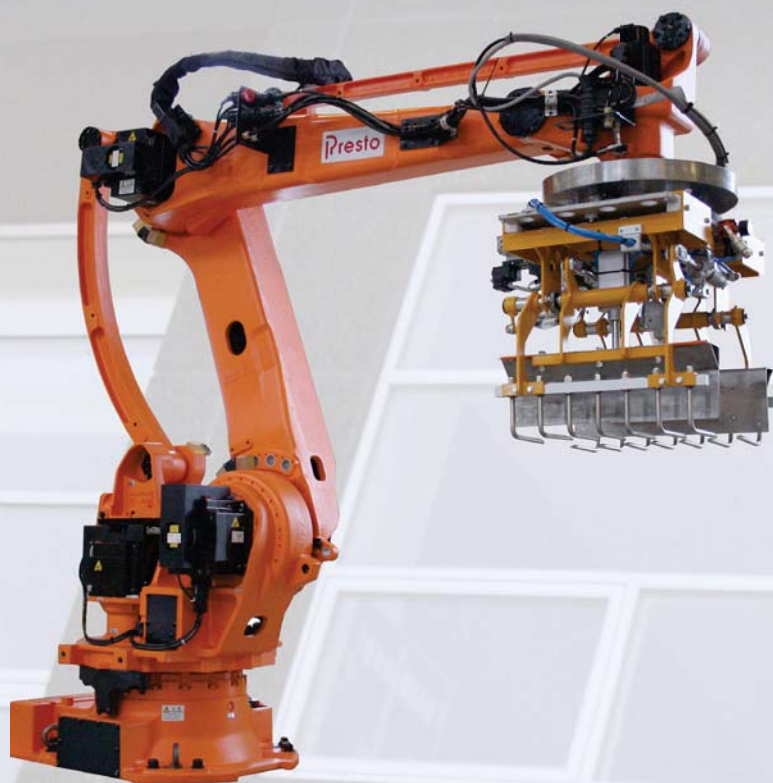


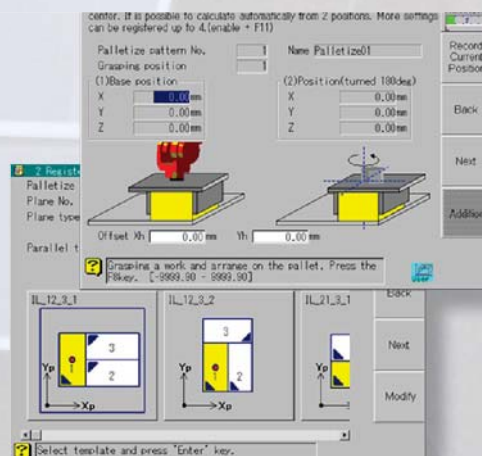
GENERAL FEATURES



The Nachi LP130 and LP180 are specifically designed for palletizing and depalletizing of boxes and bags in demanding, industrial environments.

EASY TO TEACH

The robots come with a software which simplifies programming for palletizing operations. A backbone program to identify the pick up position and drop off pallet position is all what the programmer has to program as the rest is calculated by the palletizing software running in the robot controller.

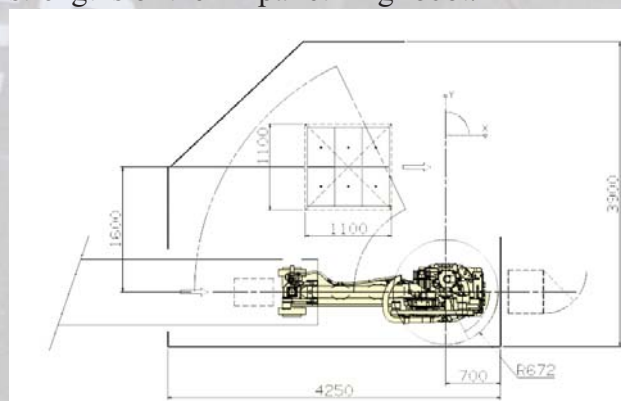


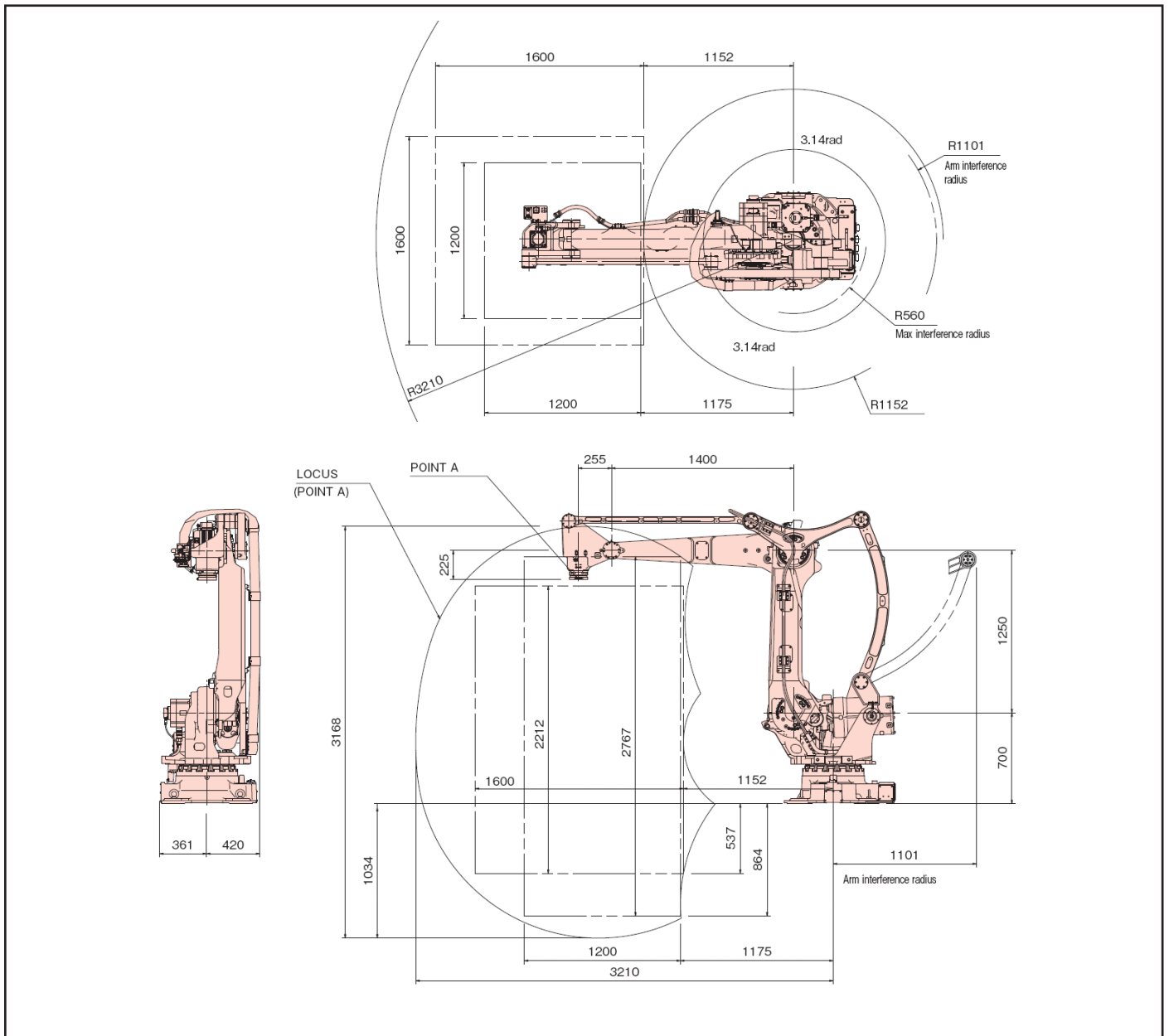
Nachi LP series palletizing robots feature “Path Optimization” software that reduces cycle time and increases throughput. This means the robot changes the palletizing path for each layer and follows the shortest and fastest path from the pick up point to the release point.

High capacity and compact layout are some of the strengths of the LP palletizing robot.



Teach pendant for controlling of the robot. The teach pendant has a friendly user interface with access to help menu for each function. The help menu describes the function and gives the user an example of the specific function in use.





TECHNICAL SPECIFICATIONS

Technical data	LP 130	LP 180
Max. payload	130 kg	180 kg
Capacity	up to 1800 cycl/hr	
Axis	4	
J1	±180°	
J2	+41° ~ -95°	
J3	+17° ~ -117°	
J4	±360°	
Repeat position accuracy	±0,3mm	±0,4mm
Maximum loading height	2.787 mm	
Ambient temperature	0 - 45 °C	
Robot weight	1150 kg	



Tel: +45 87 93 82 22
Mail: info@fisker.as

Fax: +45 87 93 82 20
www.fisker.as